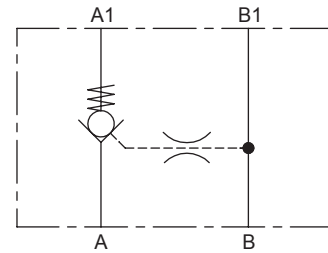
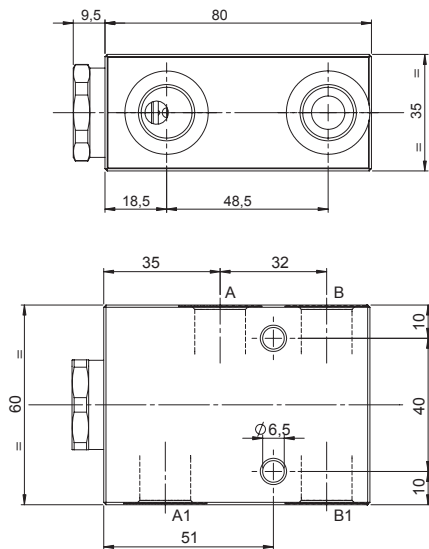


SINGLE ACTING PILOT OPERATED CHECK VALVE

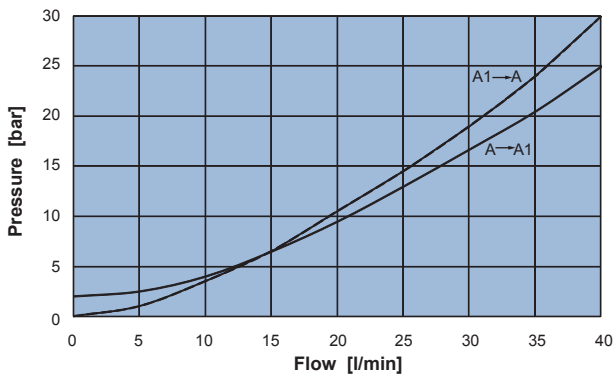
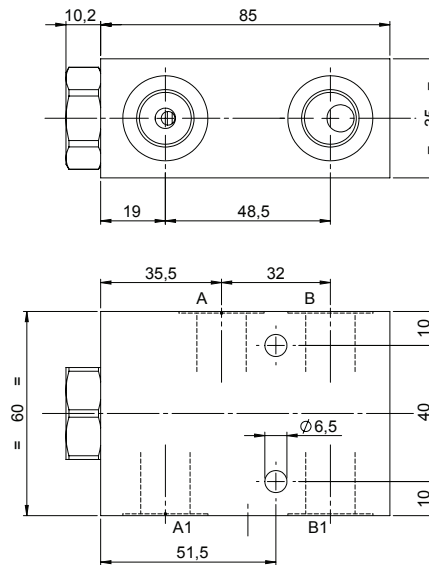
- Flow **40 l/min**
- Max working pressure **210 bar**
- Weight **0,5 Kg**



HEAVY DUTY VERSION (OPTION 0)



BASIC VERSION (OPTION 1)



NEM Pilot Operated check valves are supplied in two versions:

The basic version, which is characterized by a robust and simple design. The basic version is suitable for almost all applications.

The Heavy Duty version, which allows the most critical applications to be achieved thanks to its cartridges. On request, the Heavy Duty version can be supplied with hardened sealing seat also.

Ordering code

6 D 1 0 [] 2 [] [] A [] 0 0

VERSION	
0	Heavy Duty
1	Basic

PILOT RATIO		
70	7:1	without seal
7A	7:1	with seal

SPRING	1	2
	Setting	2,0 bar

PORTS	03
A,A1,B,B1	G 3/8"

