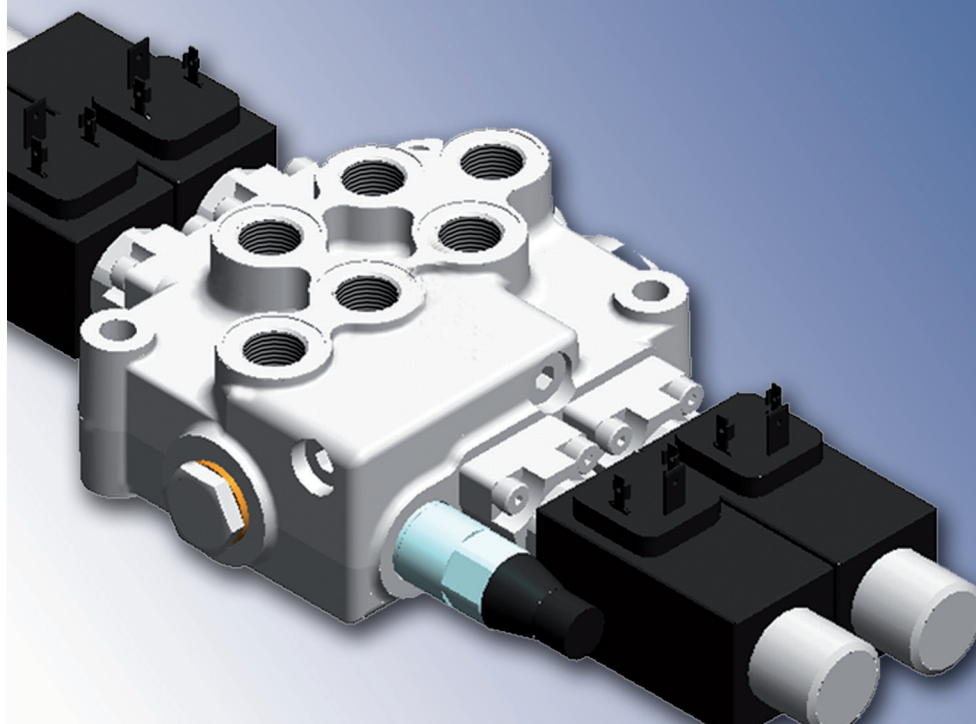


Direct electric control H036-H037



The ON-OFF electric control for HC-M45 control valves is equipped with two push-push magnets to apply a direct thrust to both ends of the spool.

The resulting operation is ideally efficient also under full flow rate (50 l/min) and maximum working pressure (250 bar) conditions. This allows a wide operating range to be achieved by using magnets with 45 W absorption.

The ON-OFF electric control HC-M45 valve is suitable for all mobile applications and in particular for agricultural harvesting machines, gardening machines and small-sized dumpers.

This actuation system is also recommended for earth moving and lifting machinery applications; in particular, it enables to remote-control truck mounted crane and aerial platform stabilizers.

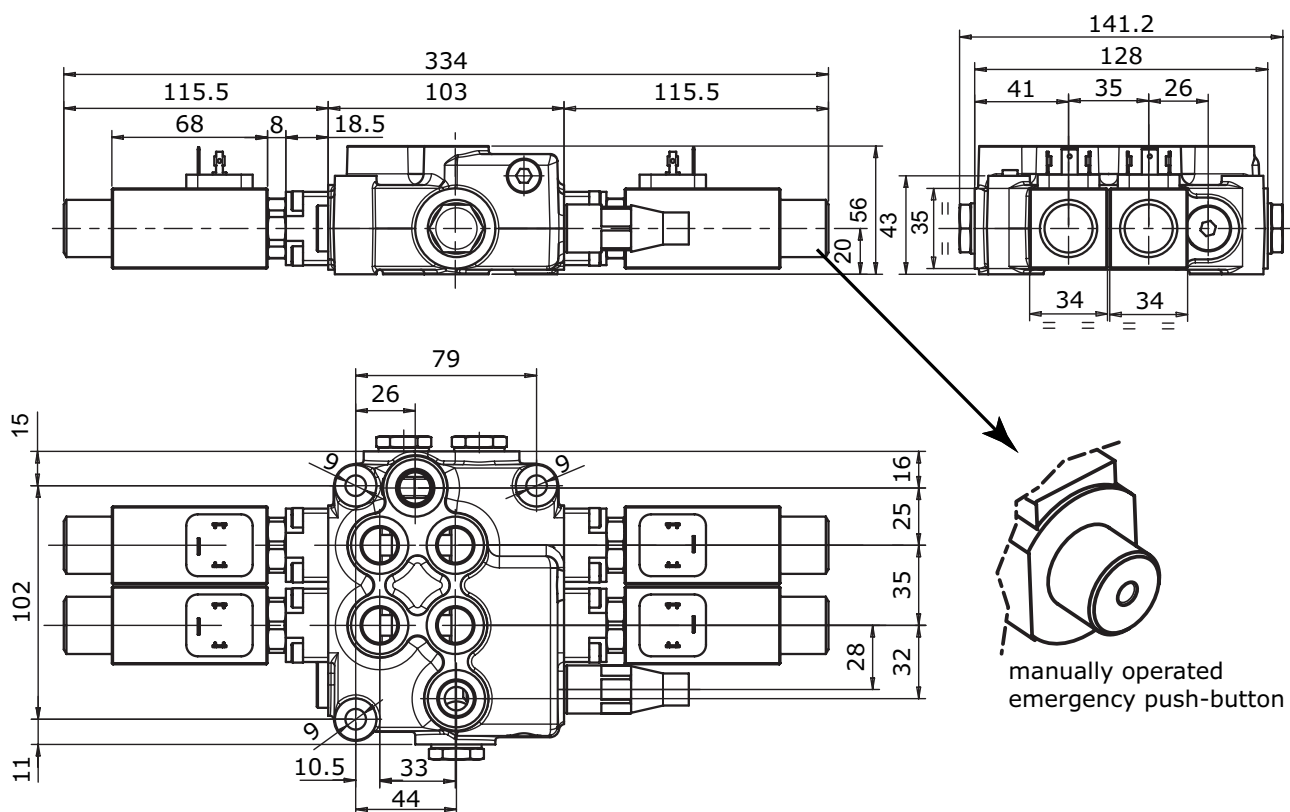
The same solution is also available for HC-D3M and HC-D4 sectional valves.

Technical specifications

Rated voltage	12 VDC - 24 VDC
Rated current	3,75 A - 1,88 A
Rated power	45 W
Permitted working voltage	±10% Nominal
Max ambient temperature	+40°C
Max oil temperature	+80°C
Operation time	S1 (100%)
Protection degree	IP65
Insulation degree	H
Standard connector	DIN 43650
Spool stroke	2,5 + 2,5 mm

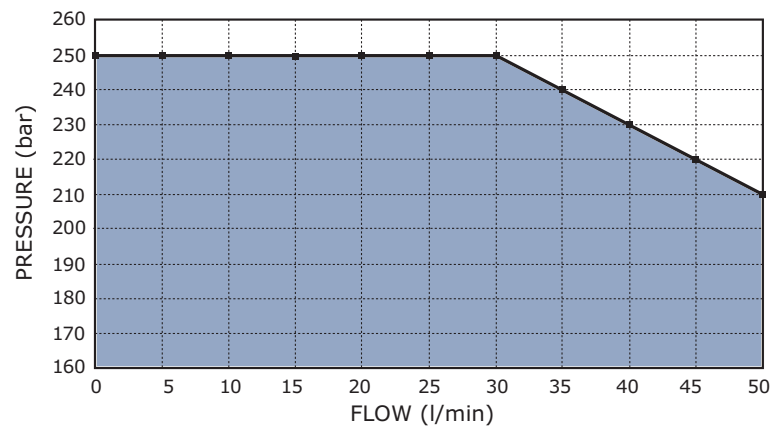
The ON-OFF Electric Control kit includes a manually operated emergency push-button.

Dimensional drawing



Operating limit curve

Data detected after voltage decrease equal to 28% of the rated value (conditions occurring with coil under stabilization temperature conditions with rated voltage reduced by 10%).

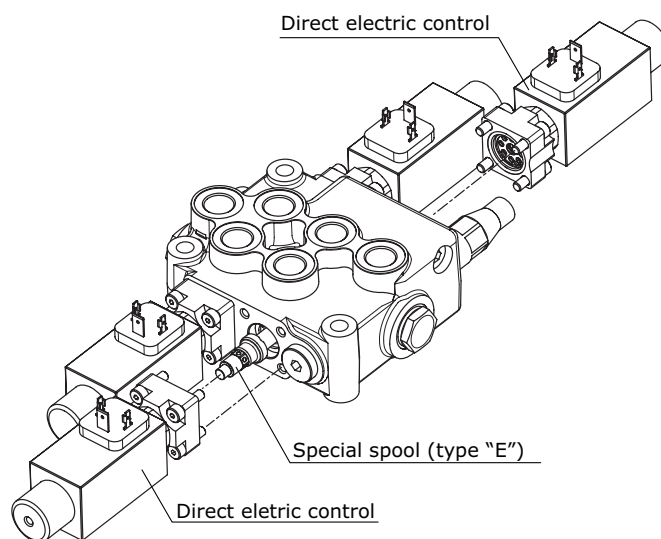


Ordering code

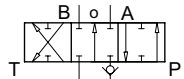
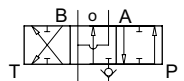
The H036 and H037 direct electric controls come as two kits each including a: coil, spring, solenoid and adapter.

The H036 and H037 electric controls use a type E special spool.

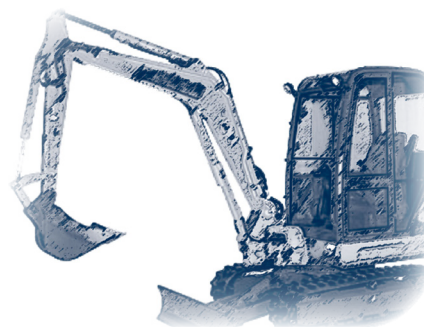
The HC-M45 control valve body is the standard type normally used for manual controls.



Code	Ordering code Control kit	Description
H036	320072020	Direct electric control 12 Vdc
H037	320072021	Direct electric control 24 Vdc

Code	Ordering code Spool	Description	Schema
W001E	430372001	Double-acting spool	
W002E	430372002	Double-acting A and B to tank spool	

The H036-H037 direct electric control is used for the following applications:

Agricultural machinery**Waste & Road****Building & Costruction****Lifting & Forestry**