

**HC-RCS foot pedal lower ports**
**Technical specifications**

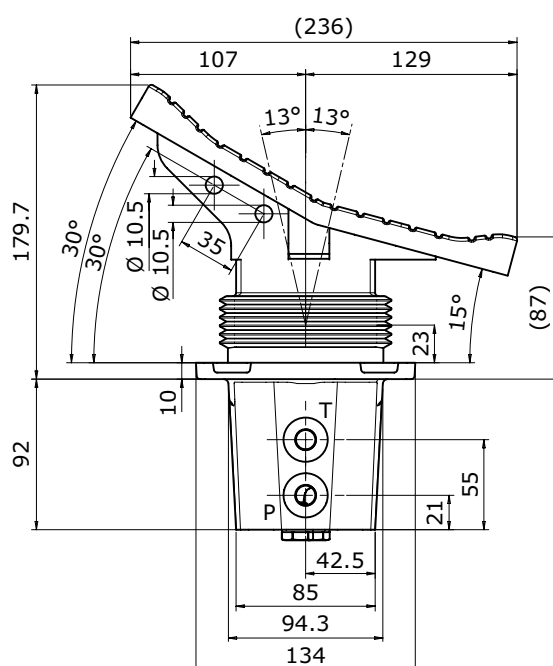
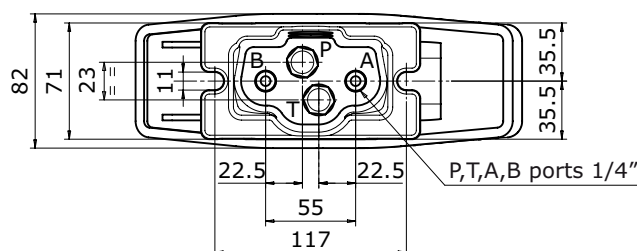
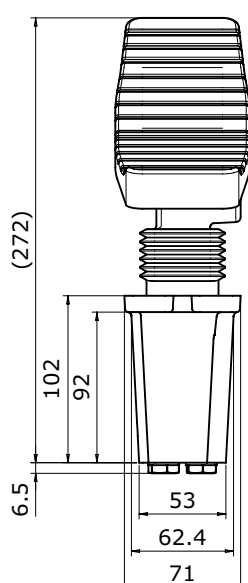
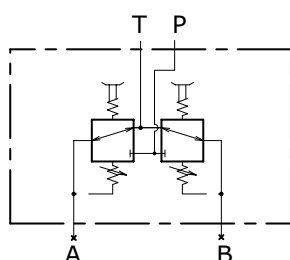
 Max pressure: **100 bar**

 Oil capacity: **12 l/min**

 Weight: **4,1 Kg**
**Applications**

Mini-excavators

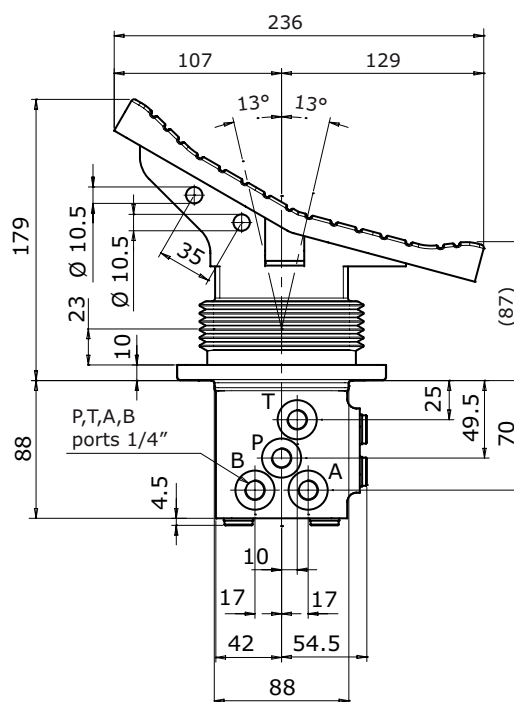
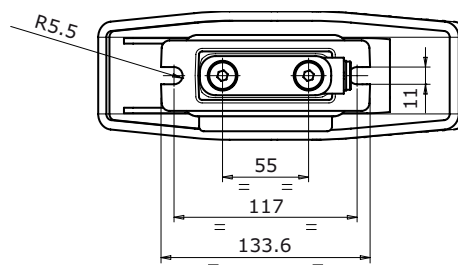
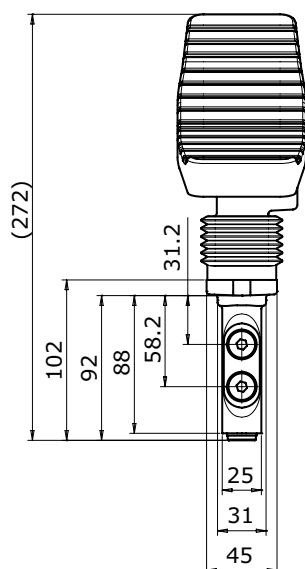
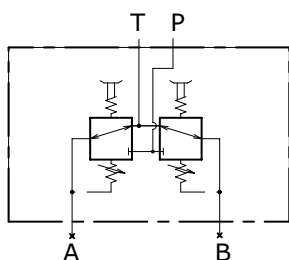
HC-RCS is a single pedal version remote control. It's a new family completing the broad range of remote control. This pedal work according to the principle of direct-acting pressure reducing valves. In rest position, the foot pedal is held in neutral by return spring; inlet port P is closed and ports are connected to tank port T. Its ergonomic design provides optimum comfort for the operator.

**Dimensions**
**HYDRAULIC SCHEMA**


### HC-RCS dimensions with narrow body

The special design with narrow body is suitable for use on small machines.

HYDRAULIC SCHEMA

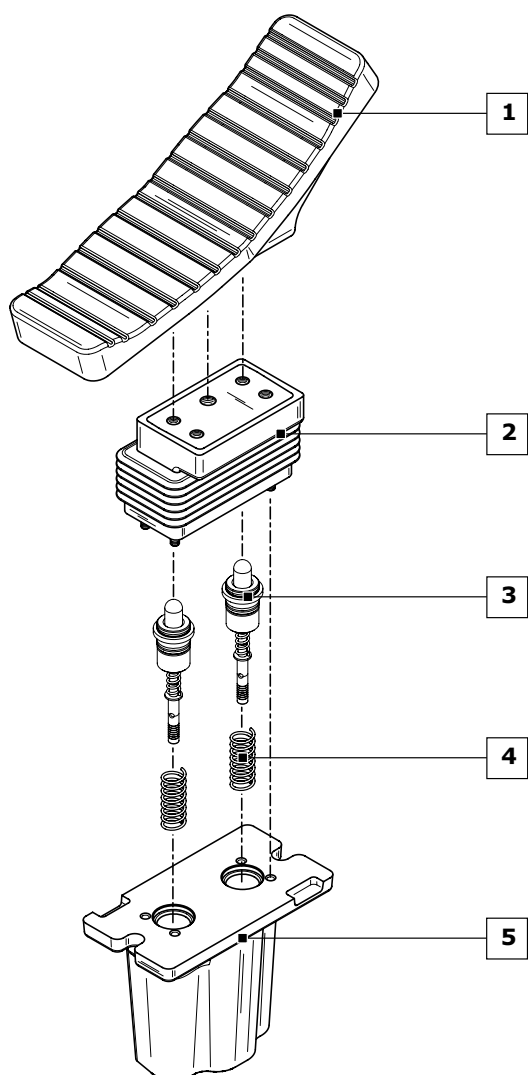


## HC-RCS order example

HC-RCS: 02P - 01S - A01T - MD - RA01 G02

- TYPE:** \_\_\_\_\_  
RCS product type
- 1) PEDAL CLASSIFICATION:** \_\_\_\_\_  
**1.1 02P** pedal type
- 2) CONTROL CLASSIFICATION:** \_\_\_\_\_  
**2.1 01S** control type
- 3) METERING CURVE:** \_\_\_\_\_  
**3.1 A01T** curve type
- 4) RETURN SPRING:** \_\_\_\_\_  
**4.1 MA** return spring type
- 5) BODY ARRANGEMENT:** \_\_\_\_\_  
**5.1 RA01** body specification  
**5.2 G02** body thread

Ordering row 3 and 4, must be repeated for each port  
complete sample: **HC-RCS 02P 01S A01T MD A01T MD RA01 G02**



### 1) PEDAL CLASSIFICATION: (pag. 51)

- 00P** Without pedal (prearrangement)  
**01P** Standard flat pedal  
**02P** Short pedal tilted 30°  
**03P** Long pedal tilted 30°

### 2) CLASSIFICAZIONE PEDALE: (pag. 51)

- 01S** Control kit with bellows

### 3) METERING CURVE: (pag. 76)

- A01T** Linear metering curve with step (tipo A)  
**B01T** Linear metering curve without step (tipo B)

### 4) RETURN SPRING: (pag. 79)

- NOTE: only available spring tipe "MD"  
**MD** Preload 94 N End stroke load 149 N

### 5) BODY ARRANGEMENT: (pag. 52)

- RA01 G02** P - T lower (G 1/4 ports)  
**RA02 G02** P - T side (G 1/4 ports)  
**RA03 G02** A - B - P - T side (G 1/4 ports)  
**RA04 G02** A - B side P - T lower (G 1/4 ports)  
**RA11 G02** P - T front A - B lower (G 1/4 ports)  
**RA12 G02** A - B - P - T side (G 1/4 ports)  
**RA13 G02** P - T side A - B lower (G 1/4 ports)  
**RA14 G02** P - T front A - B side (G 1/4 ports)  
**RA01 U02** P - T lower (9/16-18 UNF ports)  
**RA02 U02** P - T side (9/16-18 UNF ports)  
**RA03 U02** A - B - P - T side (9/16-18 UNF ports)  
**RA04 U02** A - B side P - T lower (9/16-18 UNF ports)  
**RA11 U02** P - T front A - B lower (9/16-18 UNF ports)  
**RA12 U02** A - B - P - T side (9/16-18 UNF ports)  
**RA13 U02** P - T side A - B lower (9/16-18 UNF ports)  
**RA14 U02** P - T front A - B side (9/16-18 UNF ports)

### Pedal classification

All controls installed on the foot pedal HC-RCS are interchangeable. Pedals represented correspond to standard configurations; for different applications contact our Commercial Dept.

CODE	DIMENSIONS	CONFIGURATION	DESCRIPTION
00P			Without pedal (prearrangement)
01P			Standard flat pedal with rubber protection
02P			Short pedal tilted 30° with rubber protection
03P			Long pedal tilted 30° with rubber protection

### Control kit classification

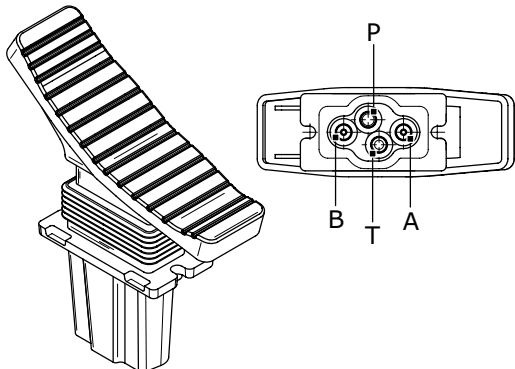
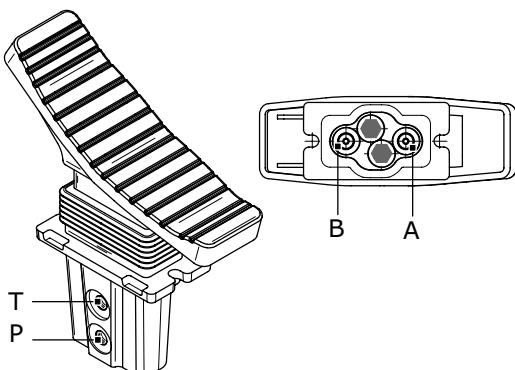
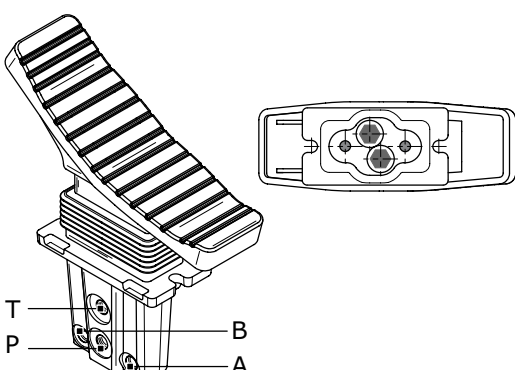
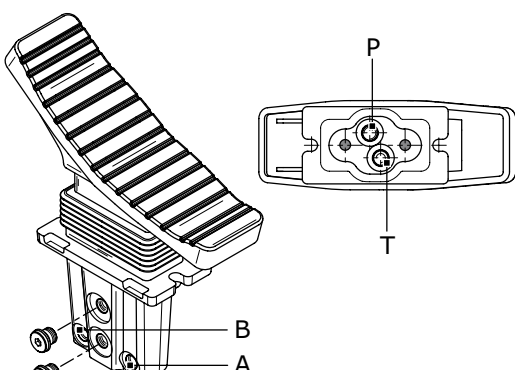
Only one configuration is available; for different applications contact our Commercial Dept.

CODE	DIMENSIONS	CONFIGURATION	DESCRIPTION
01S			Control kit with bellows

Metering curves are available equipped with a swing-preventing dampening device; for more informations contact our Commercial Dept.

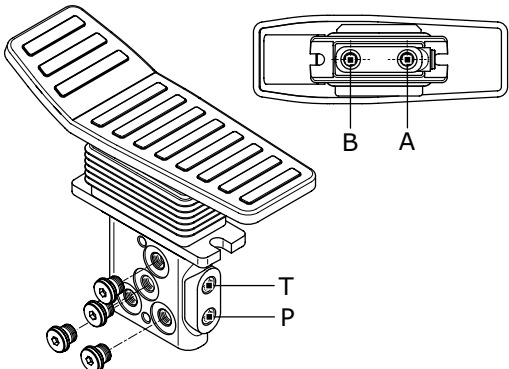
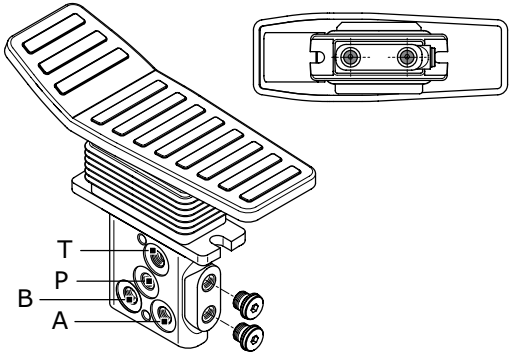
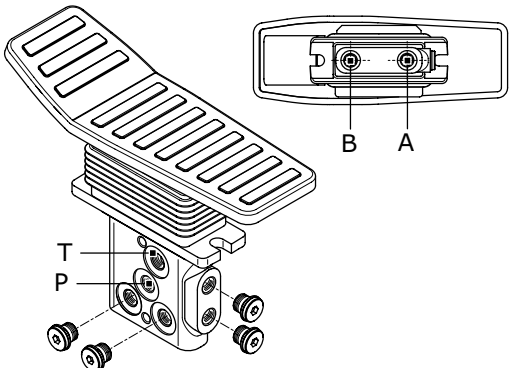
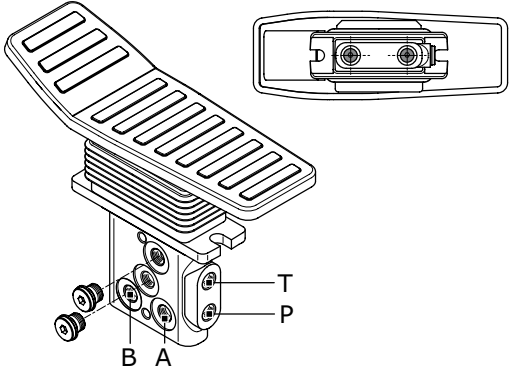
## Standard body arrangement

The listed configurations are all the possible combinations that can be obtained with the HC-RCS standard body; two different pitch threads are available. For different applications contact our Commercial Dept.

CODE	CONFIGURATION	DESCRIPTION
RA01 G02		<b>Standard body (ports P-T lower)</b> with ports G 1/4
RA01 U02		<b>Standard body (ports P-T lower)</b> with ports 9/16" - 18 UNF
RA02 G02		<b>Body (ports P-T side)</b> with ports G 1/4
RA02 U02		<b>Body (ports P-T side)</b> with ports 9/16" - 18 UNF
RA03 G02		<b>Body (ports A-B-P-T side)</b> with ports G 1/4
RA03 U02		<b>Body (ports A-B-P-T side)</b> with ports 9/16" - 18 UNF
RA04 G02		<b>Body (ports A-B side) (ports P-T lower)</b> with ports G 1/4
RA04 U02		<b>Body (ports A-B side) (ports P-T lower)</b> with ports 9/16" - 18 UNF

### Narrow body arrangement

The listed configurations are all the possible combinations that can be obtained with the HC-RCS narrow body; two different pitch threads are available. For different applications contact our Commercial Dept.

CODE	CONFIGURATION	DESCRIPTION
RA11 G02		<b>Standard body</b> <b>(ports P-T front)</b> <b>(ports A-B lower)</b> with ports G 1/4
RA11 U02		<b>Standard body</b> <b>(ports P-T front)</b> <b>(ports A-B lower)</b> with ports 9/16" - 18 UNF
RA12 G02		<b>Body</b> <b>(ports A-B-P-T side)</b> with ports G 1/4
RA12 U02		<b>Body</b> <b>(ports A-B-P-T side)</b> with ports 9/16" - 18 UNF
RA13 G02		<b>Body</b> <b>(ports P-T side)</b> <b>(ports A-B lower)</b> with ports G 1/4
RA13 U02		<b>Body</b> <b>(ports P-T side)</b> <b>(ports A-B lower)</b> with ports 9/16" - 18 UNF
RA14 G02		<b>Body</b> <b>(ports P-T front)</b> <b>(ports A-B side)</b> with ports G 1/4
RA14 U02		<b>Body</b> <b>(ports P-T front)</b> <b>(ports A-B side)</b> with ports 9/16" - 18 UNF