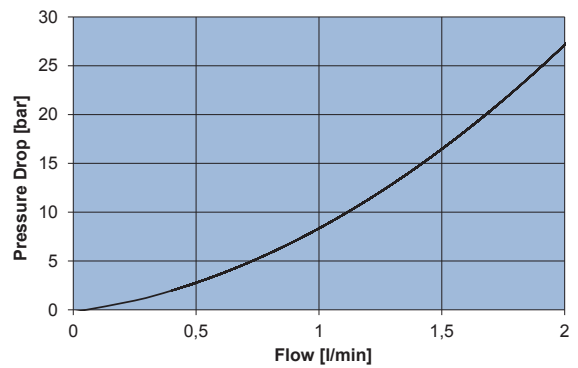
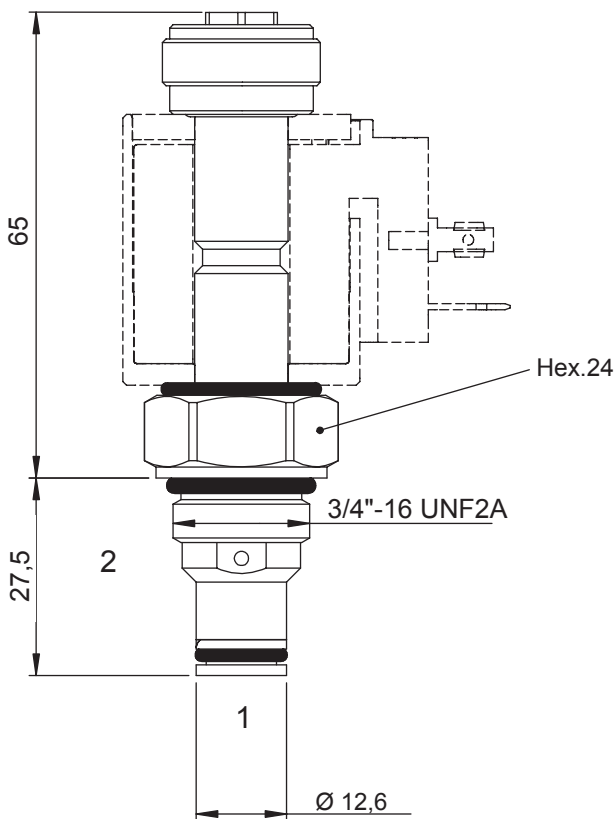
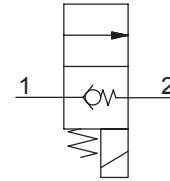


### 2 WAY 2 POSITION ELECTRIC POPPET VALVE, DIRECT ACTING NC

- Flow. . . . . **.2 l/min**
- Max working pressure in 1 . . . . . **350 bar**
- Max working pressure in 2 . . . . . **20 bar**
- Leakage. . . . . **0,25 cc/min**
- Seals . . . . . **NBR and PTFE**
- Cartridge tightening torque. . . . . **30 Nm**
- Ring nut tightening torque. . . . . **5 Nm**
- Weight . . . . . **0,32 Kg**
- Cavity . . . . . **C220000** page 208
- Body. . . . . **171202** page 186
- Coil (to be ordered separately) . . . . . **09400** page 179



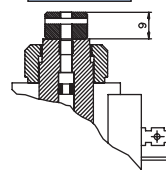
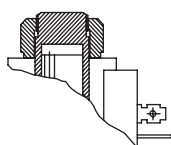
**Note:**  
- Check valve cracking pressure (1→2) > 350 bar.

#### Ordering code

0 5 3 2 1 1 0    0 0

0

6



**No emergency    Unscrew type**

